

# MONTHLY MEMBERSHIP PROGRESS REPORT

LOCATION INDIANA

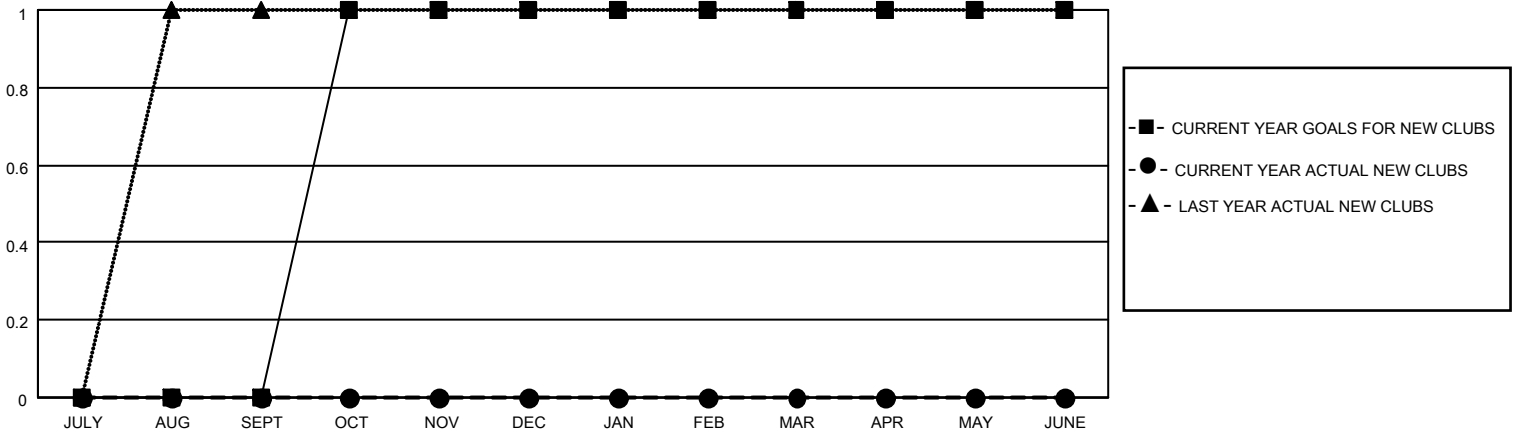
District 25 E

Results as of: 2/28/2022

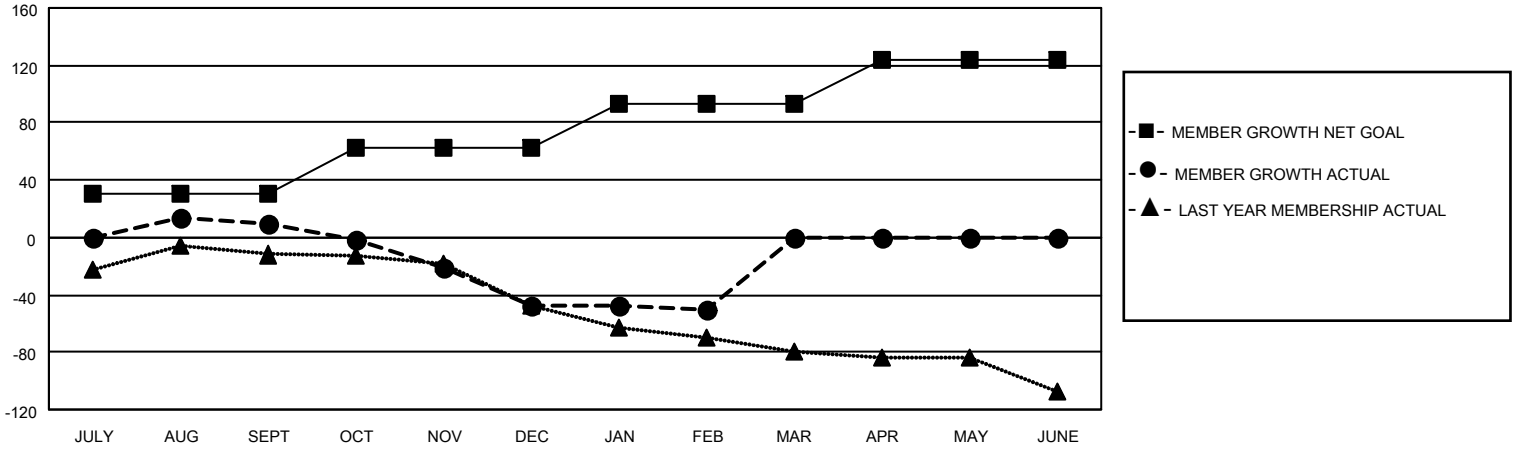
Clubs			
RESULTS FOR 2021-2022			
QUARTER	NEW CLUB GOAL	NEW CLUBS	DROPPED CLUBS
JULY/AUG/SEPT	0	0	0
OCT/NOV/DEC	1	0	1
JAN/FEB/MAR	0	0	1
APR/MAY/JUNE	0	0	0

Members			
RESULTS FOR 2021-2022			
QUARTER	MEMBER GROWTH NET GOAL	MEMBER GROWTH ACTUAL	DROPPED MEMBERS ACTUAL (including transfers)
JULY/AUG/SEPT	31	37	25
OCT/NOV/DEC	31	17	74
JAN/FEB/MAR	31	18	19
APR/MAY/JUNE	31	0	0

**GOALS AND ACTUAL NEW CLUBS CUMULATIVE**



**GOALS AND ACTUAL MEMBERS CUMULATIVE**



**DROPPED CLUBS: 2**

25 CLUBS OF 56 ADDED 1 OR MORE NEW MEMBERS

GENDER DISTRIBUTION

DROPPED MEMBERS

DECEASED	29
CLUB CANCELLED	17
OTHER	72
<b>TOTAL</b>	<b>118</b>

MALE	784 (62.67%)
FEMALE	467 (37.33%)
NON BINARY	0 (0.00%)
PREFER NOT TO ANSWER	0 (0.00%)

[CLICK HERE FOR CUMULATIVE MEMBERSHIP DATA](#)

TOTAL FAMILY UNIT MEMBERS	474
FAMILY MEMBERS PAYING HALF DUES	243